

WHERE A DISCREPANCY OCCURS BETWEEN THIS DRAWING AND ANY SITE DIMENSION OR THE SPECIFICATION THIS MUST BE REPORTED BEFORE ANY OF THE WORK SHOWN ON THIS DRAWING IS COMMENCED.  
THE CONTENTS OF THIS DRAWING IS THE COPYRIGHT OF TELIOS NAMIBIA CONSULTING ENGINEERS (PTY) LTD AND MUST NOT BE REPRODUCED IN WHOLE OR IN PART WITHOUT THEIR WRITTEN APPROVAL BEING GIVEN AND RECEIVED.

**NOTES**

- ALL DIMENSIONS ARE IN MILLIMETERS (mm)
- PRECAST CONCRETE PAVERS (60mm 30 Mpa) TO BE USED FOR PAVING LAID IN HERRINGBONE PATTERN
- ALL CEMENT TO BE ORDINARY PORTLAND CEMENT UNLESS OTHERWISE APPROVED.
- ALL CAST IN ITEMS TO BE SUPPLIED BY CIVIL CONTRACTORS AND BE FREE OF OIL, GREASE, DIRT OR ANY OTHER MATERIAL WHICH MAY IMPAIR WITH THE BOND TO THE CONCRETE.
- LEVELS TO BE CHECKED AND APPROVED BY ENGINEER BEFORE BACKFILLING
- ARROWS SHOW DIRECTION OF FLOW OF STORM WATER CONTRACTOR IS TO MAINTAIN A SLOPE BETWEEN 1.0 %
- RENCHING MUST BE BACKFILLED TO MANUFACTURERS REQUIREMENTS AND COMPACTION TO ENGINEER'S REQUIREMENTS.
- IMPORTED GRAVEL TO BE APPROVED BY ENGINEER BEFORE COMMENCEMENT OF WORK

No.	REVISIONS	DATE	APPROVED

**Approval**  
Name: \_\_\_\_\_  
Rank: \_\_\_\_\_  
Signed: \_\_\_\_\_  
Date: \_\_\_\_\_ Stamp

**CLIENT**  
**REPUBLIC OF NAMIBIA**  
  
**MINISTRY OF HEALTH AND SOCIAL SERVICES**  
**FACILITY PLANNING**  
NAMIBIA PRIVATE BAG 13198 WINDHOEK TEL: (061) 203 299 FAX: (061) 222 558

	SURVEYED	DESIGNED	DRAWN	CHECKED	APPROVED	SIGNED
NAME	Veronjamo Kamukuka Pr. Eng.	Veronjamo Kamukuka Pr. Eng.	Matty Hauganga Pr. Eng.	Matty Hauganga Pr. Eng.		
DATE						

**CIVIL & STRUCTURAL ENGINEER**

  
Phone: +264 61 223004 Fax: +264 061 400328  
P.O. Box 9993 Windhoek 24 Dr. Kuaima Riruako street Windhoek  
Email: office@teliosnamibia.com.na

**ARCHITECT**  


**QUANTITY SURVEYOR**

  
P.O. Box 3098 WINDHOEK Tel: 061 - 228 834 Fax: 061 - 227 621

**MECHANICAL & ELECTRICAL ENGINEER**

  
P.O. Box 98195 PELICAN SQUARE WINDHOEK Tel: 061 - 232052 Fax: 061 - 232053

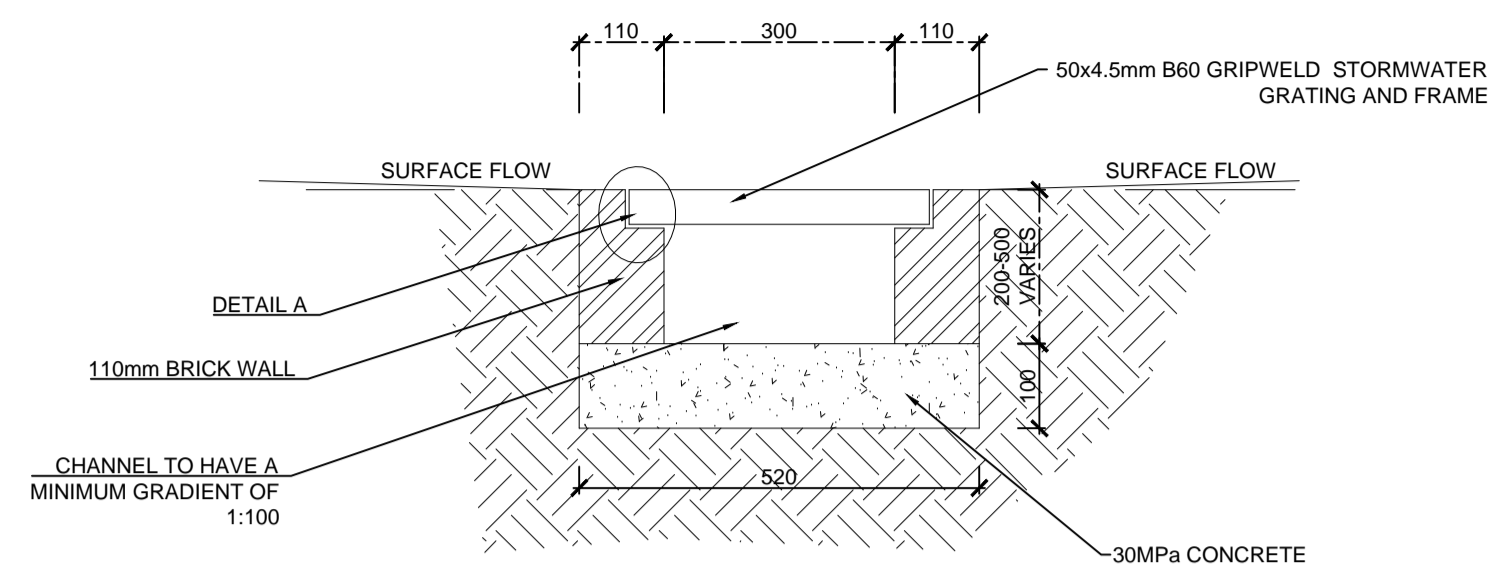
**PROJECT TITLE**  
**UPGRADE OF OTAVI HEALTH CENTRE FOR THE MINISTRY OF HEALTH & SOCIAL SERVICES**

**DRAWING TITLE**  
**STORM WATER DETAILS**

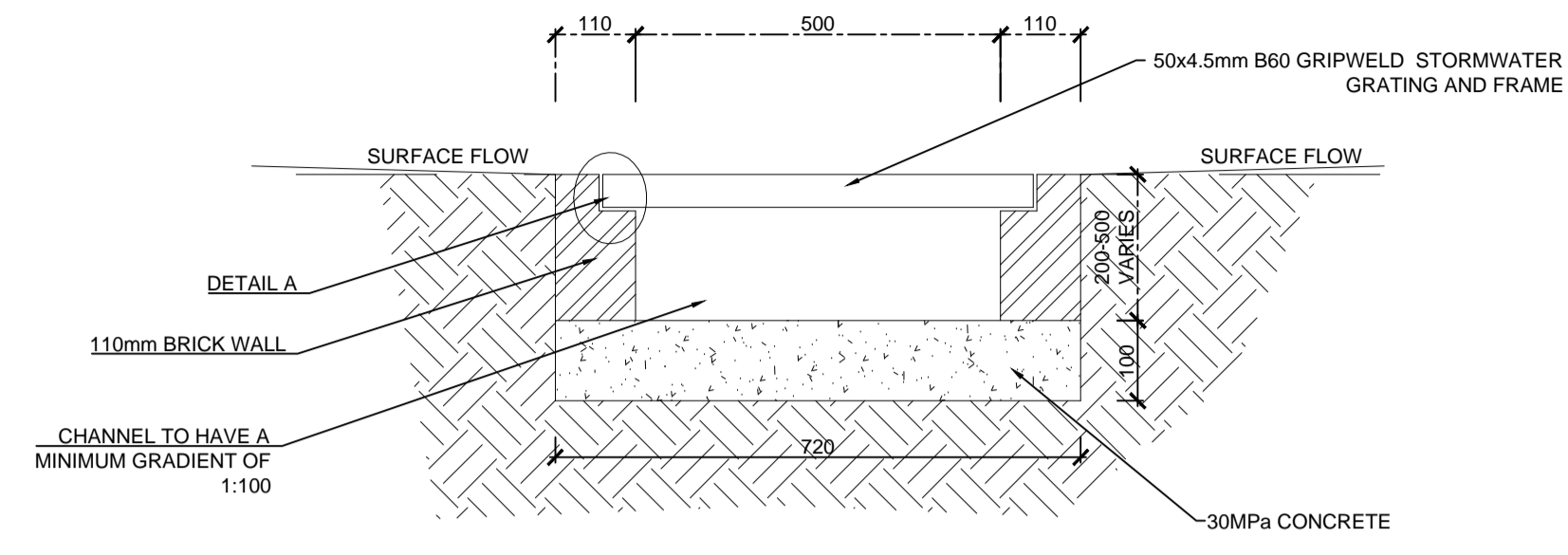
SCALE AS SHOWN DATE FEBRUARY 2020

CONSULTANT PROJECT NUMBER 52/CE/SWD/02

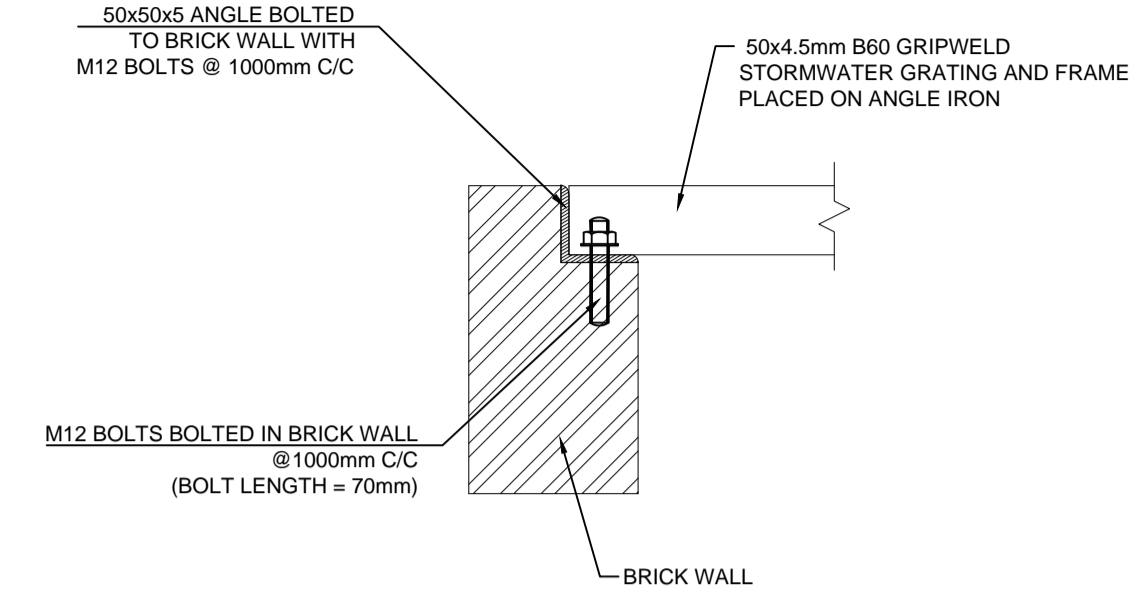
DEPARTMENTAL PROJECT NUMBER	DRAWING NR	REVISION
	02	



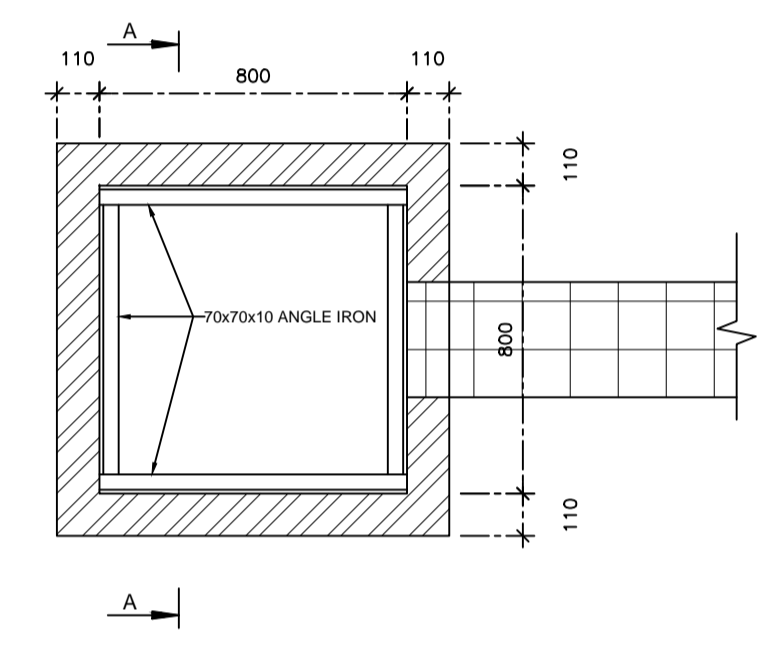
**STORMWATER CHANNEL SECTION**  
SCALE 1 : 10



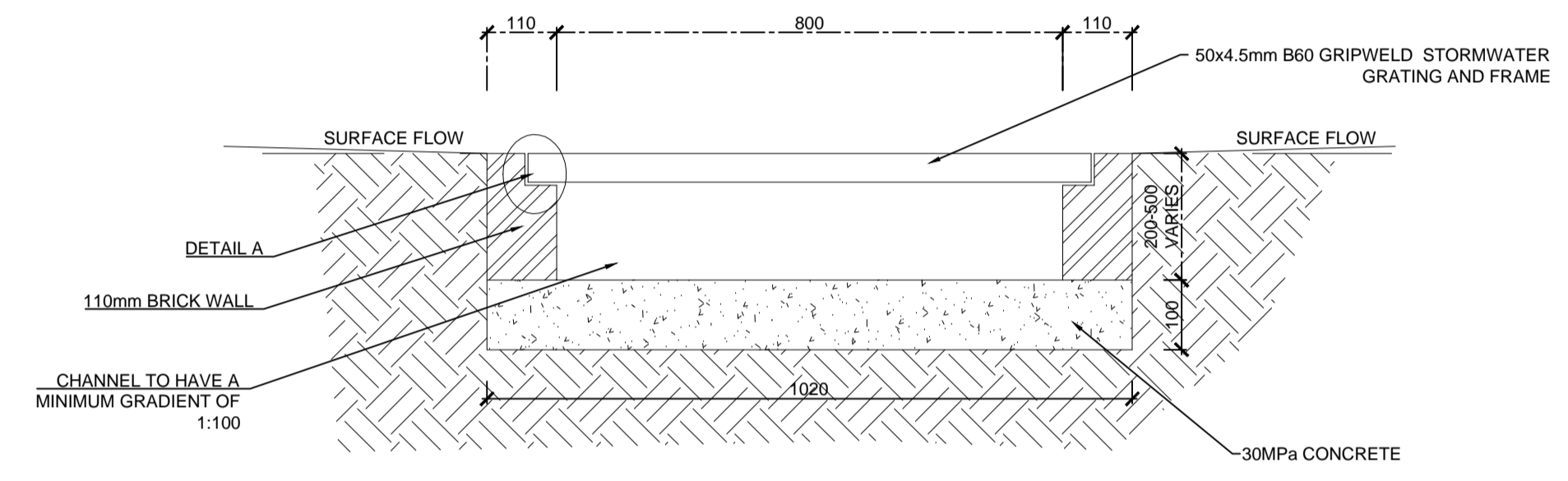
**STORMWATER CHANNEL SECTION**  
SCALE 1 : 10



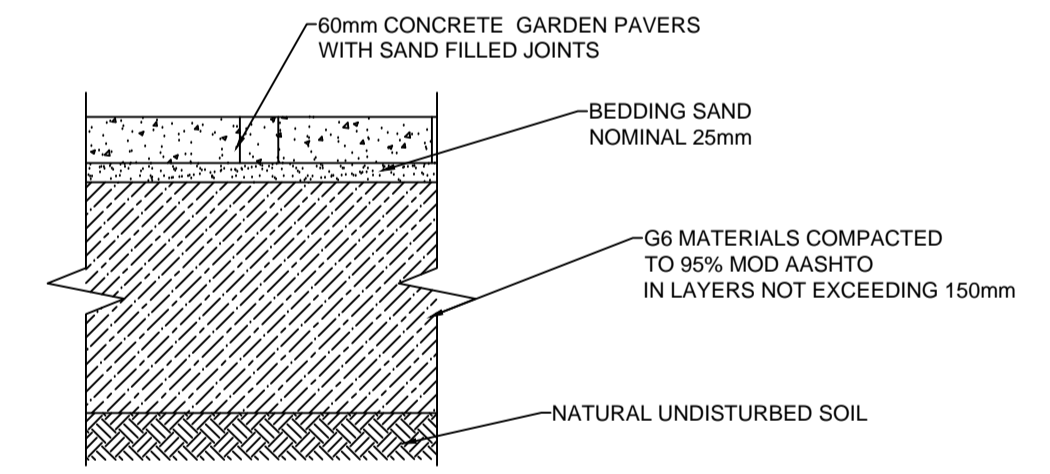
**DETAIL A**  
SCALE 1:5



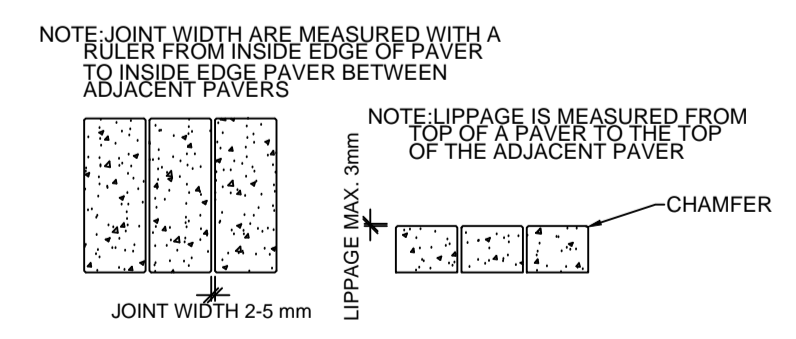
**STORM WATER DROP GRID INLET PLAN**  
SCALE 1:20



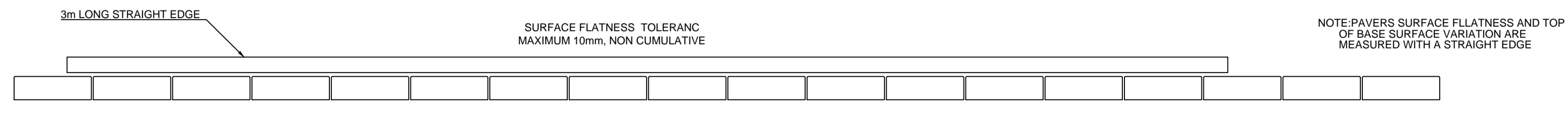
**STORMWATER DROP GRID CHANNEL SECTION**  
SCALE 1 : 10



**COMPONENTS OF INTERLOCKING CONCRETE PAVEMENT WITH GARDEN KERBS**  
SCALE 1:10



**VERTICAL TOLERANCE MEASUREMENT GUIDANCE**  
SCALE 1:10



**HORIZONTAL TOLERANCE MEASUREMENT GUIDANCE**  
SCALE 1:10